



Rostec



Infratec
Infrastructure holding



“ Today, we must focus our efforts on improving the quality of engineering and technical education by strengthening the collaboration between educational institutions and industry.

The implementation of the corporate education system for employees and corporate organizations creates conditions for the sustainable development of human resources and ensures that the quality of management personnel meets modern requirements and international standards in the field of innovation management.

”

CHEMEZOV SERGEY VIKTOROVICH

Chairman of the Russian Union of Mechanical Engineers
CEO of the State Corporation ROSTEC

“ The Russian Federation's industry is facing increasingly complex challenges, the solution to which requires the training of qualified personnel. This is due to the significant growth in the range, volume, and pace of production for the military-industrial complex and the import substitution program. The use of tools provided by Federal Law No. 115 "On Concession Agreements" allows us to address these challenges.

Using the latest scientific advances and industrial experience will help develop young people's creative initiatives and implement innovative ideas and developments.

”

DEREVYANKO SERGEY STANISLAVOVICH

Chairman of the Board of Directors of JSC MC Infratec Concessions





COMPANY

Infratec Infrastructure Holding is the Rostec State Corporation's center of excellence in public-private partnership transactions.

The infrastructure holding includes Infratec Management Company JSC, the management company; InfraKapStroy LLC, the technical customer service; and specialized companies, including operating companies. The holding has strategic partnership agreements with VEB.RF, Sberbank PJSC, PSB Bank PJSC, and other development institutions that provide a sustainable model for quickly and effectively attracting extra-budgetary funding sources.

TEAM

Infratec Infrastructure Holding is a team of experienced professionals dedicated to implementing PPP projects at every stage of the life cycle, from the initial concept, which involves identifying desirable facilities and sites for their placement, developing a financial model for the project, scenarios for its legal implementation, and raising the necessary financing, to developing design documentation, organizing the construction process, and operating the project using modern information modeling technologies. Our specialists have extensive experience and expertise in design, construction, project management, analytics, financial modeling, and legal support.

AREAS OF WORK

Our priority is the implementation of large-scale, socially significant projects aimed at developing key areas of city and regional life. This strategy places particular emphasis on developing the education system, expanding cultural initiatives, improving the healthcare system, supporting and developing sports programs, and modernizing industry and transport infrastructure. These projects contribute to improving the quality of life, creating new jobs, and strengthening the region's economic potential. We strive for comprehensive development that will ensure sustainable growth and prosperity of the city's infrastructure.

DEREVYANKO

Sergey Stanislavovich
JSC MC Infratec

Chairman of the Board of Directors

Previously holding senior positions at JSC Russian Railways-Health and other infrastructure companies, Sergey Derevyanko has extensive civil service experience, Candidate of Legal Sciences, headed the Directorate of the Ministry of Internal Affairs of Russia for the Central Federal District, holds the rank of Major General of Police.

SHISHKIN

Andrey Viktorovich
JSC MC Infratec

Managing Director, Member of the Board of Directors

Chairman of the Committee for Digitalization of Urban Development, Design, and Spatial Development of the National Association of Organizations in the Sphere of Information Modeling Technologies (NOTIM). Previously served as Deputy Head of the Federal Agency for Construction, Housing and Utilities (GOSSTROY OF RUSSIA).

VAKHRUSHEV

Mikhail Vladimirovich
Scientific and Production Holding "VMP"
("Vostochnye Mineralnye Produkty")

Member of the Board of Directors

President of the Scientific and Production Holding "VMP" ("Vostochnye Mineralnye Produkty"). Honored Entrepreneur of Sverdlovsk Region.

IVANOV

Viktor Petrovich
Association "Russian House of International Scientific and
Technical Cooperation"

Member of the Board of Directors

President of the Russian House of International Scientific and Technical Cooperation Association. For many years headed the Federal Drug Control Service of the Russian Federation and served as Deputy Chief of Staff of the Presidential Executive Office.

EPIFANOV

Anatoly Yuryevich
RT-Reservoir Systems

Member of the Board of Directors

Russian businessman and investor in high-tech manufacturing, co-founder and shareholder of ICITIPRO (intelligent access systems), Interskol Polymer (additive polymers), Ipostbox Postomaty, RT-Reservoir Systems, and other companies.

KIYKO

Mikhail Yuryevich
JSC MC Infratec

Member of the Board of Directors

Previously, he served as Deputy Director of the Federal Drug Control Service of Russia and Deputy General Director of JSC Almaz-Antey Air Defense Concern. A Colonel General of Police, an Active State Counselor of the Russian Federation, 3rd Class, and a Doctor of Economics.

SUPPORT AT ALL STAGES OF PROJECT IMPLEMENTATION

01.

CREATION OF ARCHITECTURAL CONCEPTS

- Analysis of site planning constraints
- Determination of project technical and economic indicators
- Preliminary placement of structures on the site
- Functional zoning
- Selection of a preliminary architectural design
- Development of preliminary technical specifications

02.

FINANCIAL ASSISTANCE

- Estimating capital (CAPEX) and operating costs (OPEX)
- Preliminary financial modeling
- Creating a comprehensive financial and economic model
- Assessing investment indicators
- Attracting financing
- Interacting with banks and private investors

03.

INFRASTRUCTURE PROJECT MANAGEMENT

- Project team formation
- Monitoring key project indicators
- Organizing project participant interactions
- Preparing reporting documentation
- Full-scale technical operation of the facility

04.

LEGAL ISSUES

- Developing a private concession initiative package
- Developing a draft concession agreement
- Providing document flow with the bank and concession grantor
- PPP transactions and concession agreements support
- Working with contractors and consulting companies

05.

TECHNICAL CONSTRUCTION SUPPORT

- Selection of design and general contracting organizations
- Selection of technical solutions
- Determining the timing and scope of equipment delivery
- Performing the functions of a technical customer
- Financial and technical monitoring

06.

CONSULTING SUPPORT

- Developing a project implementation roadmap
- Selection of legal implementation mechanisms
- Using government support programs
- Creating a special-purpose project company

fitness and wellness centers, ice arenas, stadiums, training complexes,
phygital centers

SPORT

highways, interchanges, transport hubs,
airports

LOGISTICS

MEDICINE

PARKS

CULTURE

EDUCATION

theater centers, community centers,
museums and exhibition spaces

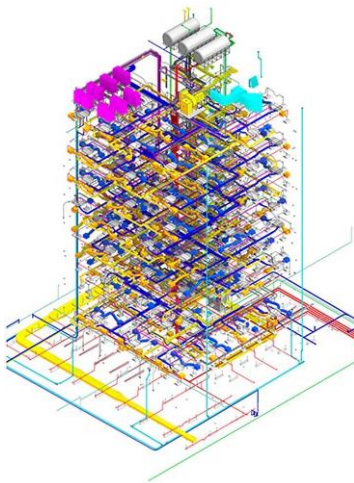
multifunctional centers, clinics, hospitals,
rehabilitation centers

multidisciplinary interuniversity campuses

Building Information Modeling

The activities of JSC Management Company Infratec are based on the requirements for the application of modern information modeling (BIM) technologies and effective lifecycle management systems for buildings, structures, and infrastructure facilities at the design, construction, and operation stages.

Complete work with the information model requires all participants to have a high level of workflow organization and well-established interactions, which eliminates the potential for unskilled personnel and reduces execution risks.



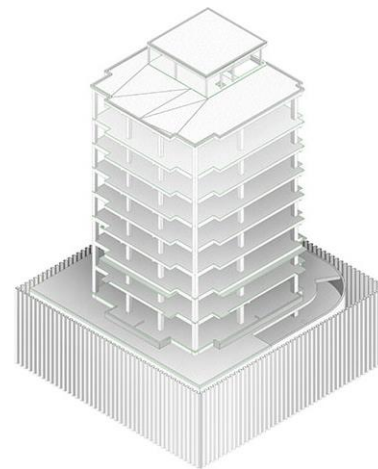
IN DESIGN

Simultaneous collaboration of the project team in a shared data environment.

Reduction in errors (collisions).

Automation of routine processes.
Use of standard elements.

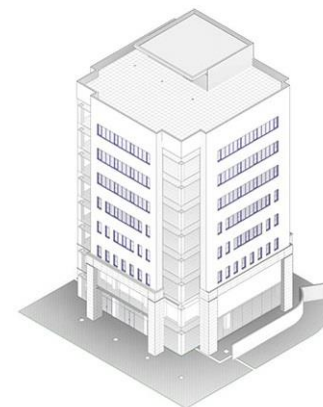
The client is part of the team and has visual control over the design process.



IN CONSTRUCTION

Detailed cost estimates allow for monitoring the scope of work and managing the project's cost, reducing financial risks.

A clear construction schedule allows for monitoring the progress of work and aligning it with planned targets.



IN OPERATION

Effective management of structures, equipment, and systems.

Coordination of component procurement and maintenance work.

01.

DETERMINING TERMS

- Forming a working group
- Forming land plots
- Determining preliminary technical and economic indicators
- Preliminary construction cost estimate
- Attracting investment

02.

SUBMITTING A PRIVATE CONCESSION INITIATIVE (PCI)

- Developing a financial model
- Working with banks on senior debt
- Preparing a draft concession agreement
- Creating a specialized project company (SPV)
- Initiating a private concession initiative (PCI)
- Signing a concession agreement

03.

DESIGN AND CONSTRUCTION

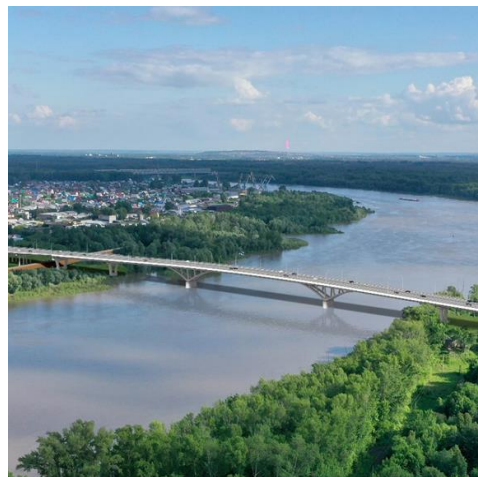
- Development of design documentation
- Review of design and estimate documentation
- Obtaining a construction permit
- Development of detailed design documentation
- Construction and installation work
- Obtaining a commissioning permit

04.

OPERATION

- Concluding lease agreements with regional operators
- Technical operation of the facility
- Transfer of the property complex to the concession grantor
- Termination of the concession agreement

Transport infrastructure



Bridge crossing the Belaya River between Revolyutsionnaya Street and the R-240 highway Republic of Bashkortostan

Total length	11 200 m
Operational period	12 years
Commissioning	2030



Highway «Irkutsk Bypass»

Total length	42 950 m
Operational period	25 years
Commissioning	2030



Highway with engineering structures «Western Chord» Rostov Region

Total length	7 500 m
Operational period	25 years
Commissioning	2031



Phygital center
Kirov

Total area	2 706 m ²
Operational period	10 years
Commissioning	2027



Phygital center
Moscow

Total area	6 500 m ²
Operational period	13 years
Commissioning	2029



Ice Arena
Kaliningrad

Total area	29 365 m ²
Operational period	10 years
Commissioning	2030

Education



Interuniversity campus
Kirov

Total area	100 250 m ²
Operational period	20 years
Commissioning	2031



Interuniversity campus
Khabarovsk

Total area	89 592 m ²
Operational period	19 years 6 months
Commissioning	2030



International Science and Technology Park
Moscow region

Total area	131 300 m ²
Operational period	20 years
Commissioning	2030



House of Culture
Khabarovsk Region

Total area	110 000 m ²
Operational period	20 years
Commissioning	2031



Theater and cultural center "Baikal"
Ulan-Ude

Total area	18 979 m ²
Operational period	10 years
Commissioning	2026



National Museum of the Republic of Buryatia
Ulan-Ude

Total area	14 883 m ²
Operational period	10 years
Commissioning	2026



Medicine



Ussuri Medical and Rehabilitation Center
Khabarovsk Krai

Total area	39 673 m ²
Operational period	14 years 6 months
Commissioning	2030



Clinical Hospital for War Veterans
Republic of Bashkortostan

Total area	52 109 m ²
Operational period	11 years
Commissioning	2030



Eastern Medicine Center with a Rehabilitation
Department
Republic of Buryatia

Total area	9 300 m ²
Operational period	10 years
Commissioning	2031



Rostec



Infratec
Infrastructure holding

Infratec Management Company Joint-Stock Company
TIN 9704076309 / KPP 770401001
123112, Moscow, Presnenskaya Naberezhnaya, 8 bld. 1
Tower "City of Capitals", North Block, 15th Floor
+7 (495) 790-39-30, info@infratec-rt.ru
www.infratec-rt.ru

